



Iron Horse Vineyard

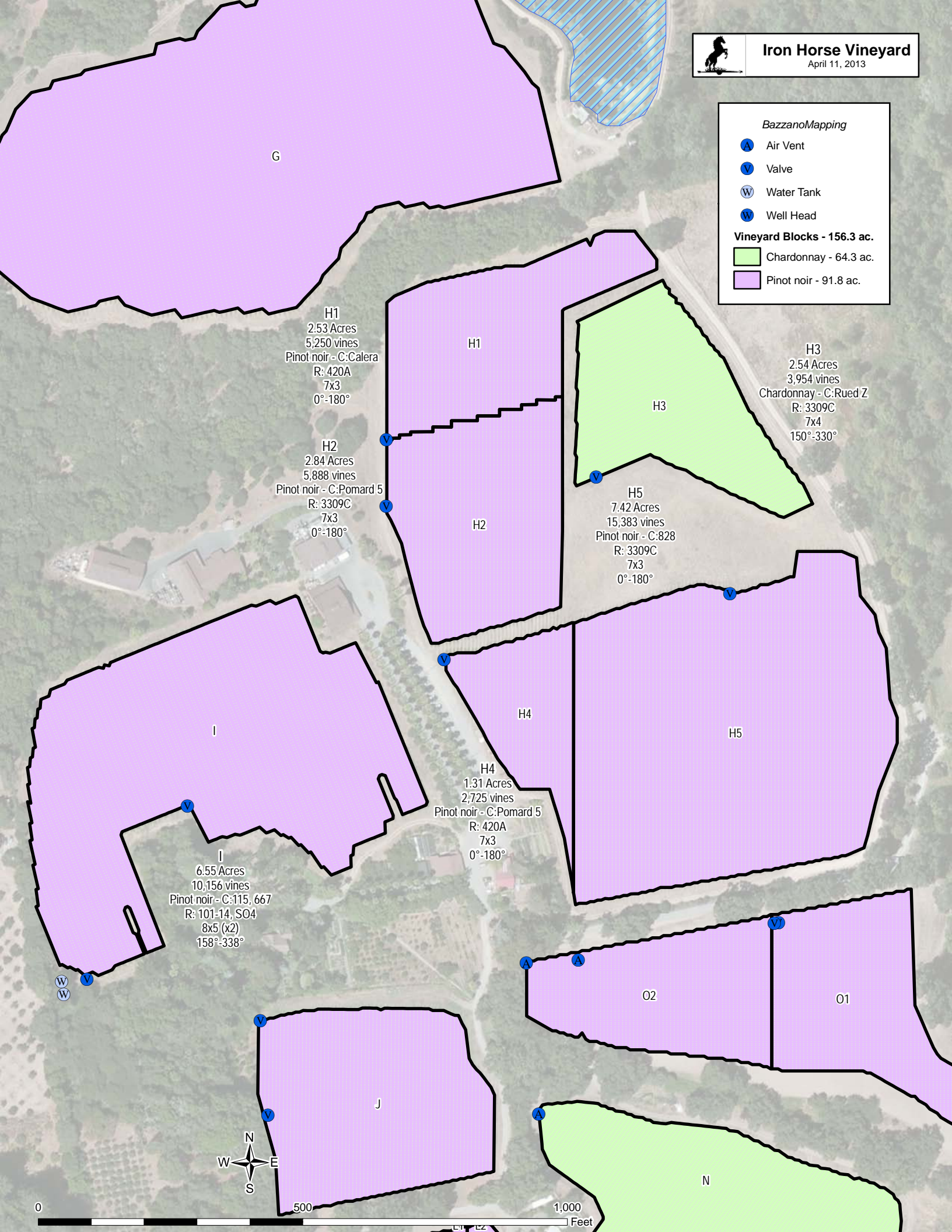
April 11, 2013

BazzanoMapping

- Air Vent
- Valve
- Water Tank
- Well Head

Vineyard Blocks - 156.3 ac.

- Chardonnay - 64.3 ac.
- Pinot noir - 91.8 ac.



H1
2.53 Acres
5,250 vines
Pinot noir - C:Calera
R: 420A
7x3
0°-180°

H2
2.84 Acres
5,888 vines
Pinot noir - C:Pomard 5
R: 3309C
7x3
0°-180°

H3
2.54 Acres
3,954 vines
Chardonnay - C:Rued Z
R: 3309C
7x4
150°-330°

H5
7.42 Acres
15,383 vines
Pinot noir - C:828
R: 3309C
7x3
0°-180°

H4
1.31 Acres
2,725 vines
Pinot noir - C:Pomard 5
R: 420A
7x3
0°-180°

I
6.55 Acres
10,156 vines
Pinot noir - C:115, 667
R: 101-14, S04
8x5 (x2)
158°-338°

